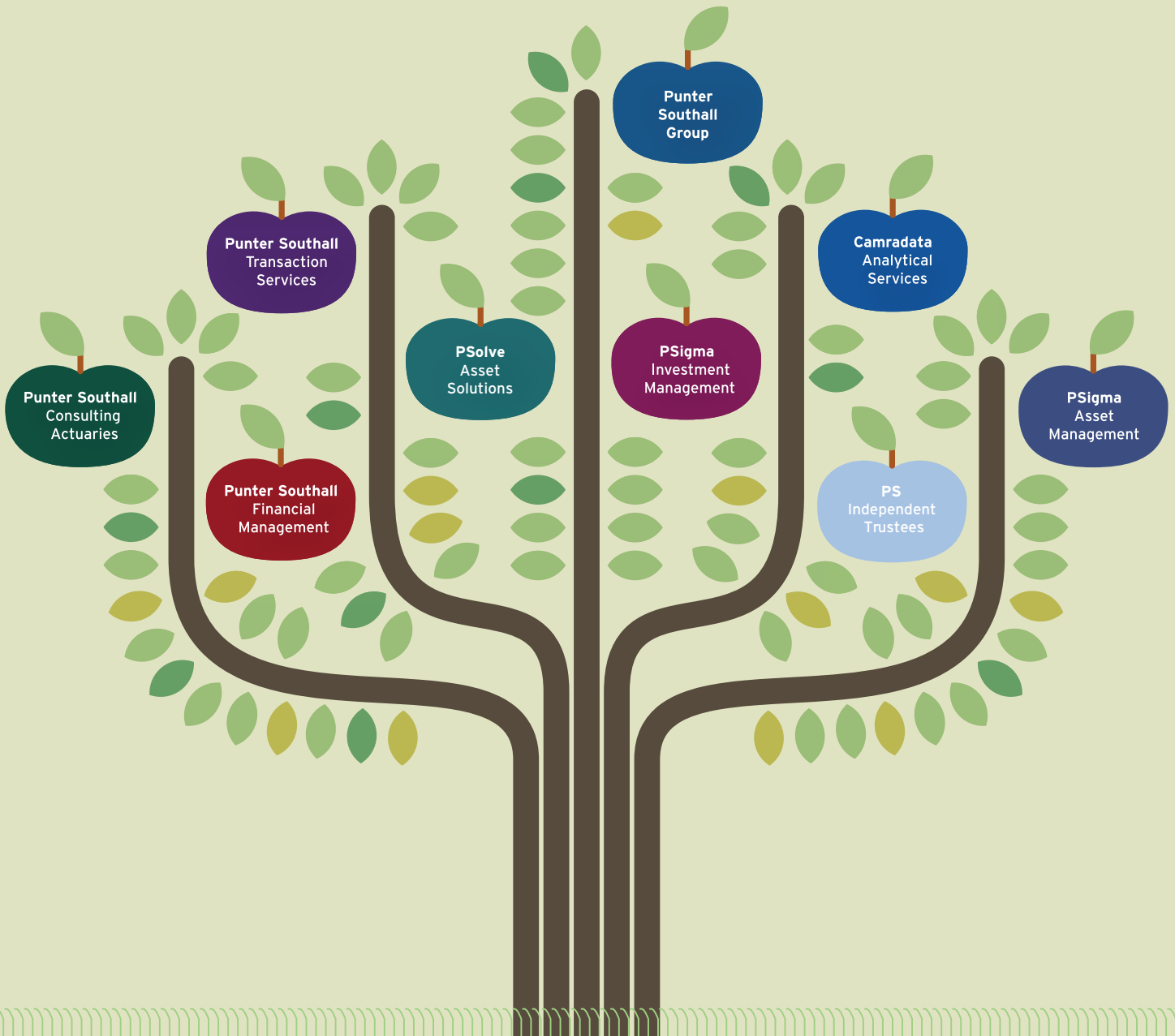


# Punter Southall Group

Deep-rooted, far-reaching investment expertise

psigma



# Greater than the sum of our parts

Part of the much larger Punter Southall Group, PSigma's deep and broad investment expertise has its roots in very solid ground. Founded in 1988, the group was originally created to provide actuarial and investment advice to UK pension schemes.

Its vision was to introduce a fresh, competitive approach to a largely static investment and financial services market, while making client service the priority. These guiding principles continue to develop and underpin Punter Southall Group's growth into a company with over 700 staff across 10 locations in the UK.

Our size and structure enable us to react swiftly to regulatory change and stay at the forefront of developments. We value innovative and creative thinking and we keep our promises - our client satisfaction feedback is testament to this.

While the culture and calibre of our people has undoubtedly been the bedrock of Punter Southall Group's success, another root and branch strength has been our ability to forge strong relationships with our clients and fellow professionals. We are collaborative in our approach, fostering an environment in which we can enjoy working with our clients as well as other industry professionals.

We've attracted a broad spectrum of UK businesses, charities and institutions with our innovative approach to financial solutions. For example, we work with everyone from private clients and owner-managed businesses right up to industry-wide pension schemes with 100,000 members.

Punter Southall Group is ambitious and entrepreneurial. What truly sets us apart is that many of our senior people have experience of setting up and running their own businesses. This real world experience combined with our depth of actuarial and investment resources means our advice and financial solutions always blend financial innovation and commercial acumen - ultimately, bearing fruit for our clients.

## Key facts about Punter Southall Group

- 700 staff in 10 locations throughout the UK
- 1,000 companies and trustees of pension schemes receiving services including: actuarial, administration, investment, employee and risk benefits advice
- 4,000 private clients
- 120,000 occupational pension scheme members administered by us
- £90m Group turnover in 2010
- £8.8bn assets under management
- £18.75bn assets under advice